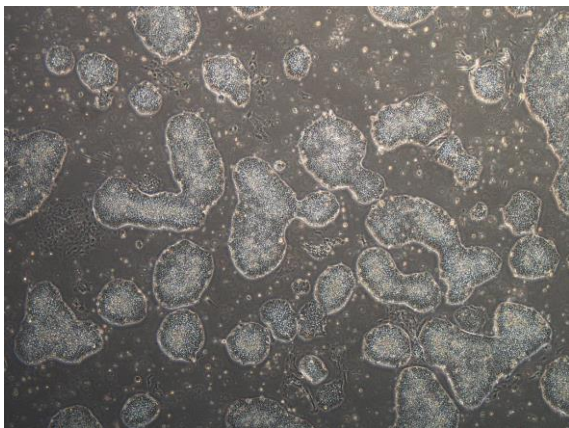


【 CiRA-j-1211 】 Morphology of iPSC colonies

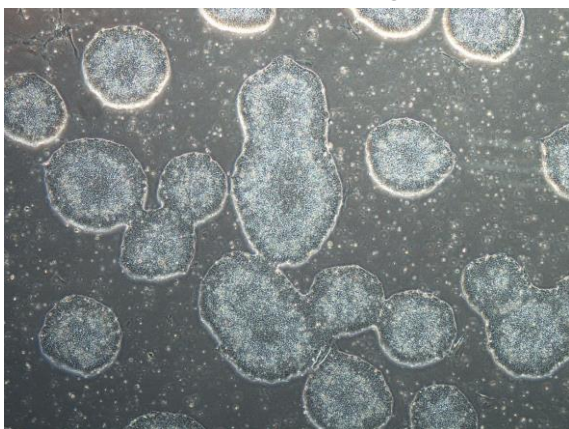
CiRA-j-1211-A: passage-3



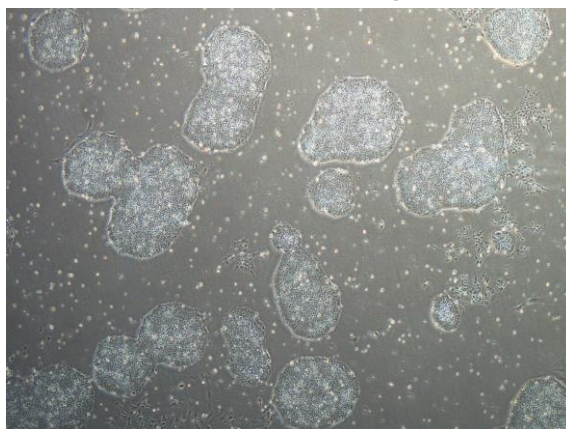
CiRA-j-1211-B: passage-3



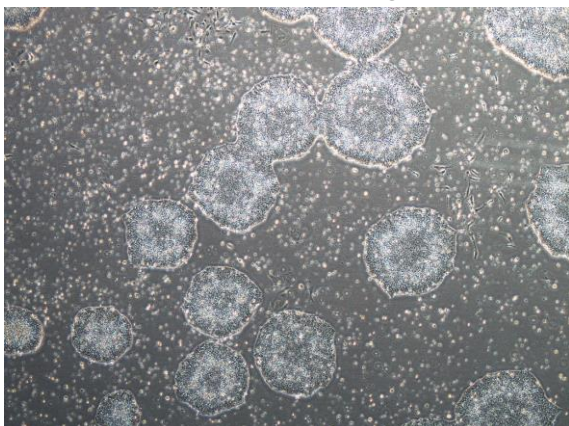
CiRA-j-1211-C: passage-3



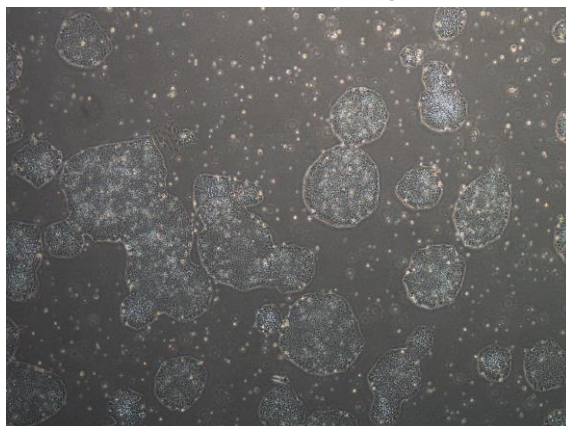
CiRA-j-1211-D: passage-3



CiRA-j-1211-E: passage-3



CiRA-j-1211-F: passage-3



(All images were captured at 4x magnification)